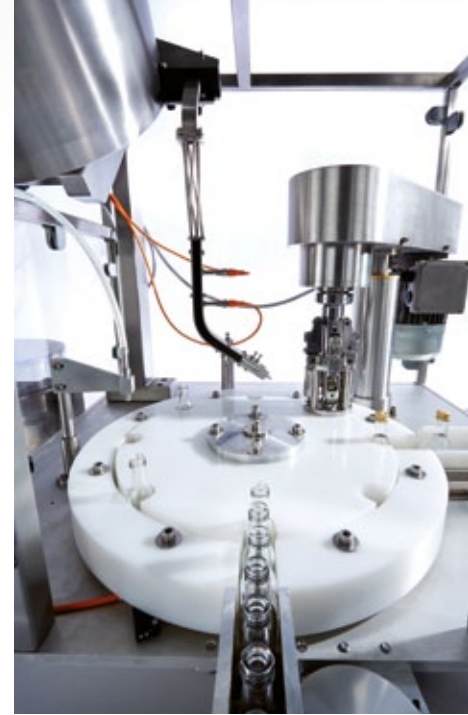




www.karmelle.com



When a UK based spirit manufacturer approached Karmelle earlier on last year to design and manufacture a machine unique to the UK, we were happy to oblige. The specifics included a machine with a small footprint, capable of filling, capping and labelling a high number of containers at a fast pace. We decided to take on the challenge, as if successful, it would be the perfect solution for so many of our customers.

The mini **Monoblock** was born:

Volumetric rotary filling machine complete with integrated capping machine to fill 10ml-1000ml containers at a rate of up to 30 pm (dependant on volumes)

Fully stainless steel construction, can be fitted with an in-feed conveyor of 82.5mm width (100mm working) or a separate feed system.



New mini Monoblock

How does it **work?**

Containers are first fed into a star wheel and thereon enter a filling station from where they are passed through another star wheel to be capped.

Following capping the containers can be fed back onto a second conveyor and passed onto the labelling machine.

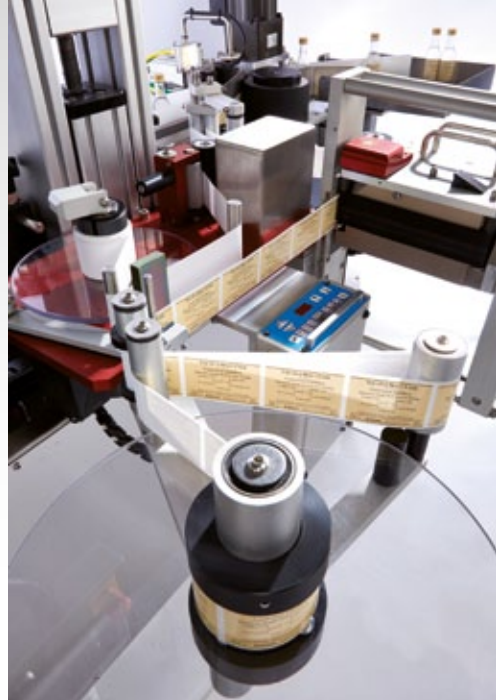
Applying a single wraparound label:

The leading edge of the label is applied to the side of container as it passes into the labelling station, which in turn spins it against a set of revolving rollers, wrapping the label firmly around the bottle. Accuracy of placing +/- 0.5 mm.

The labelling head can be equipped with an open date hot-foil printer built into it, which is capable of up to two lines of text, or a similar system.

The Specification Includes:

- Stainless steel construction through out.
- The lower construction of the machine completely enclosed in stainless steel panels.
- The upper construction consisting of stainless steel with clear lexan panels and openings.
- Safety interlock door guarding to meet EC regulations.
- Menu Driven HMI touch screen control
- Guard master safety relay and interlocks
- Pneumatic control will be full SMC specification.
- High level control panel and HMI.
- Omron PLC controls.



| | |
|---------------|---|
| Fill capacity | 10 – 1000 ml |
| Fill Accuracy | +/- 0.5% |
| Fill Speed | 30 ml @ 20 bpm estimated |
| Capping | Cap styles can either be Ropp or Standard screw cap. Automatic cap sorting and placing |

Labeller Specification

- 1 x Karmelle servo125 applicator
- 1 x 3 point wrap unit.
- 1 x Cross-support bracket for adjustment of the labeller
- 1 x Cross support bracket for adjustment of powered wrap unit
- 1 x Product sensor
- 1 x Frame (stainless steel box section frame)
- All associated guides, rollers, sensors and brackets etc

The Mini Monoblock, as the Karmelle team affectionately calls the machine, is suitable for a variety of industries including food & drink, cosmetics, chemical and pharmaceutical.

For a video of the machine running please visit our **youtube** channel: **Karmelle Ltd**

If you would like to know more about the products and services we offer, please call:

01484 533 356 or email karmelle@gmail.com

Case Study

Whisky Manufacturer, Shropshire

Karmelle Ltd was chosen by a miniature whisky bottles manufacturer, based in Shropshire, to design and develop a machine unique to the UK market – a monoblock machine capable of filling, capping and labelling a high volume of bottles in a limited space.

Karmelle were happy to accept the challenge and within a few months a brand new machine was born, a machine with a footprint of only two square metres designed to fill 30 millilitre miniature whisky bottles at twenty per minute, adjustable to different volumes and speeds.

